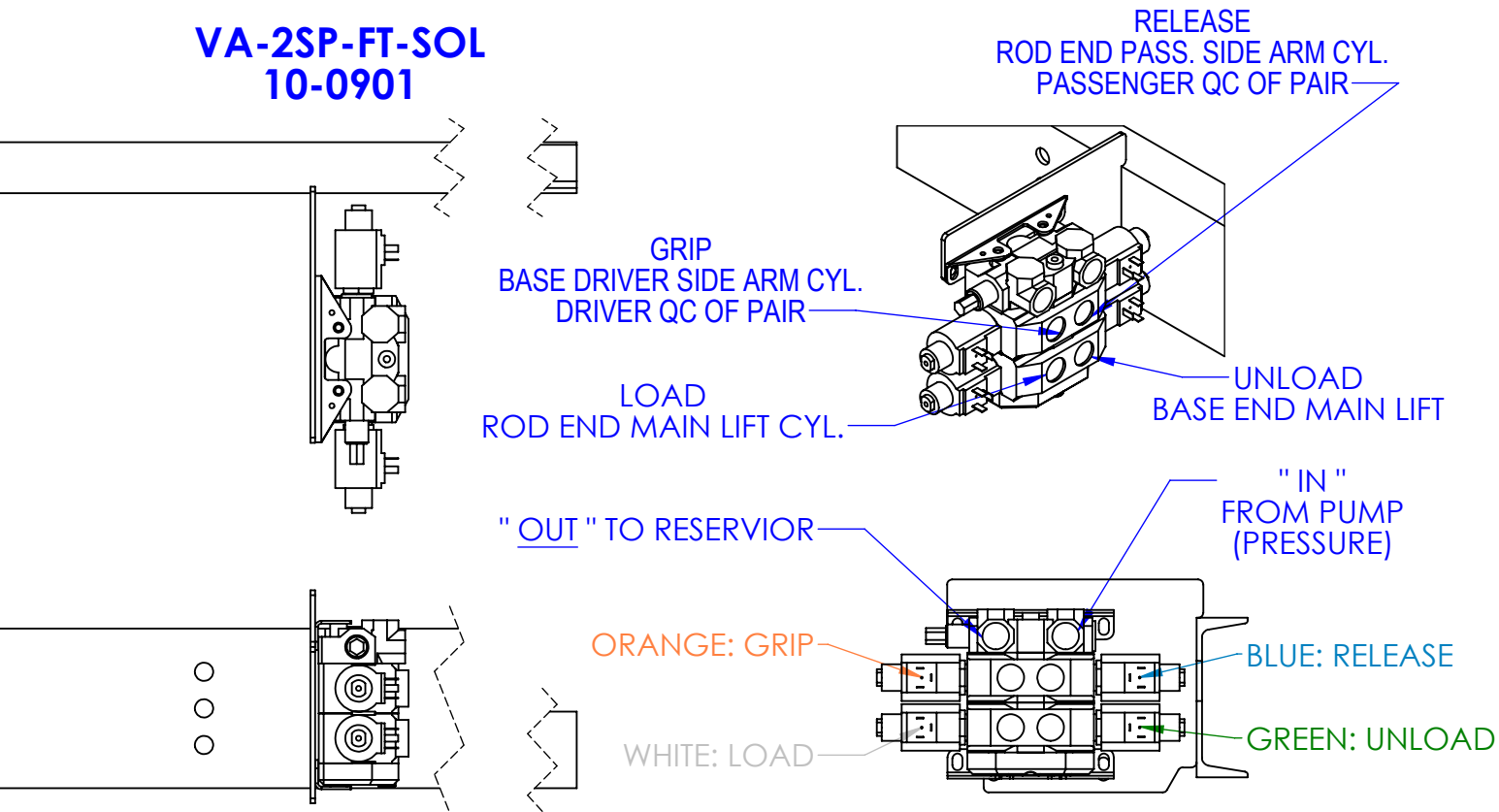
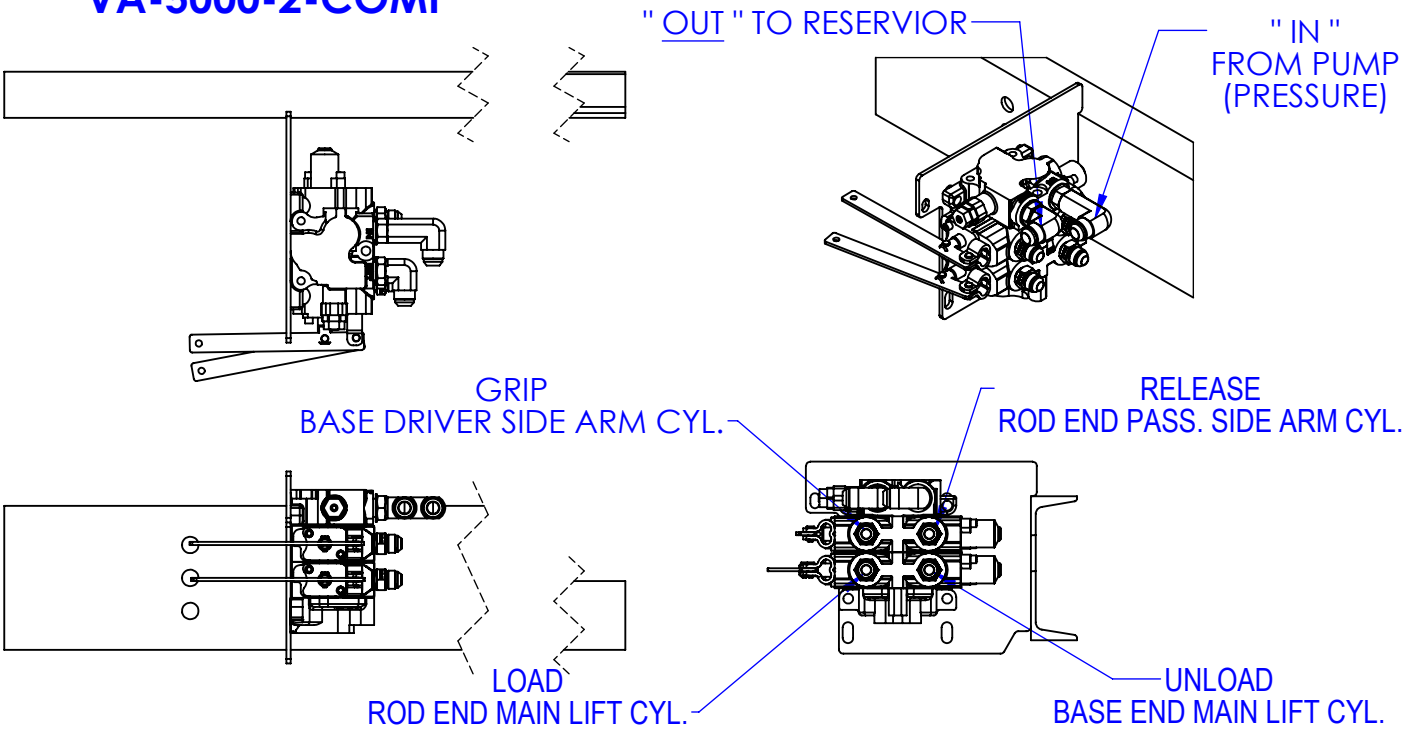


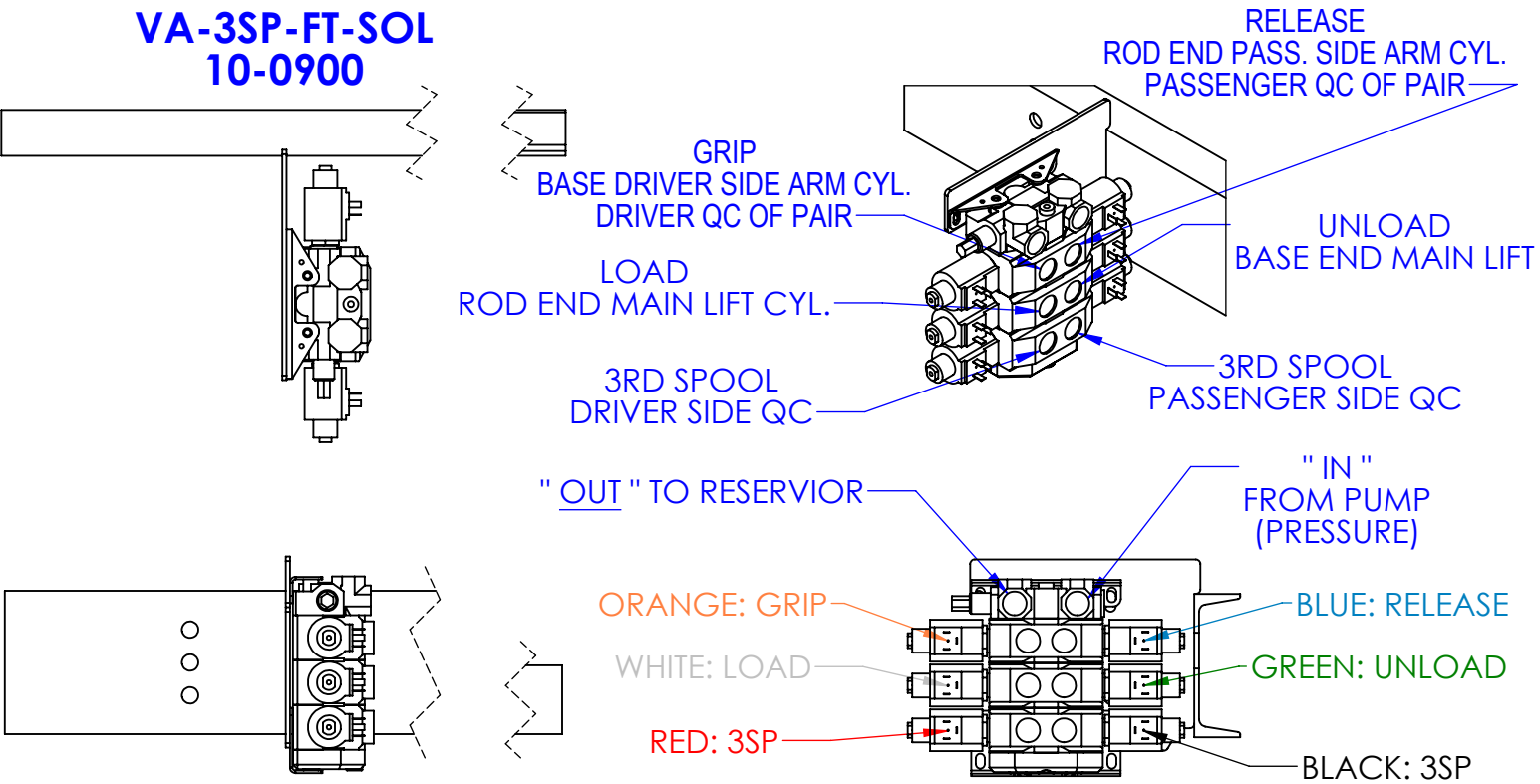
VA-2SP-FT-SOL
10-0901



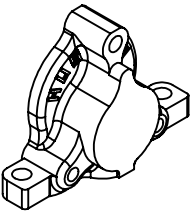
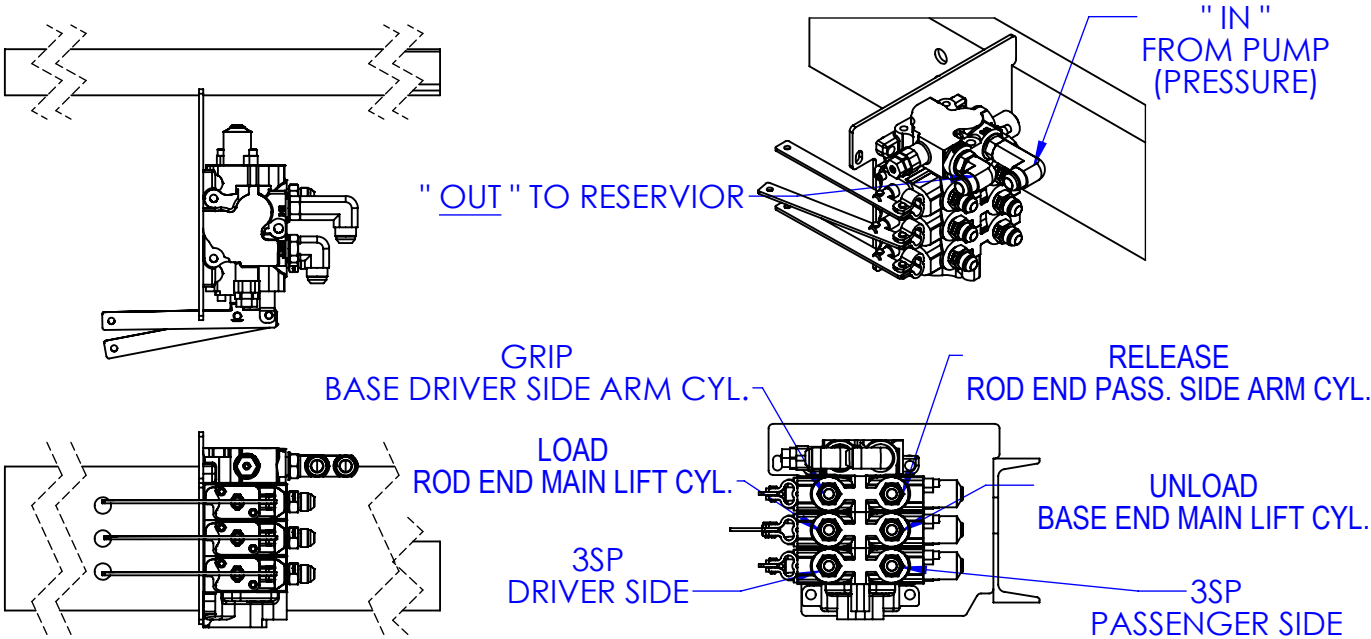
VA-5000-2-COMP



VA-3SP-FT-SOL
10-0900



VA-5000-3-COMP



33±3.5FT. LBS.

14±1.5FT. LBS.

14±1.5FT. LBS.

TORQUE SPEC
HUSCO TIE ROD

PROPRIETARY AND CONFIDENTIAL

THE INFORMATION CONTAINED IN THIS DRAWING IS THE SOLE PROPERTY OF <INSERT COMPANY NAME HERE>. ANY REPRODUCTION IN PART OR AS A WHOLE WITHOUT THE WRITTEN PERMISSION OF <INSERT COMPANY NAME HERE> IS PROHIBITED.

UNLESS OTHERWISE SPECIFIED:

DIMENSIONS ARE IN INCHES
TOLERANCES:
FRACTIONAL ±1/16
ANGULAR: MACH ± 1 BEND ±
TWO PLACE DECIMAL ±010
THREE PLACE DECIMAL ±005

MATERIAL

DO NOT SCALE DRAWING

REV.	DESCRIPTION	REVISIONS	DATE	APPROVED
A	INITIAL RELEASE		5/4/2012	
B	UPDATED ALL REFERENCES ON HUSCO VALVES		8/9/2012	
C	UPDATED LEGS ON SOLENOID VALVES		3/13/2013	

DRAWN	NAME	DATE	P.O. BOX 248, SABETHA KS. 66534 (785) 284-3674 FAX (785) 284-3931
HEATH		3/13/2013	
PART #			
ASM #	SEE DRAWING		
COMMENTS:	HYDRA BED VALVES		
SIZE	DWG. NO.	REV	
B	10-0902 C	C	
SCALE: 1:8	WEIGHT:	SHEET 1 OF 1	